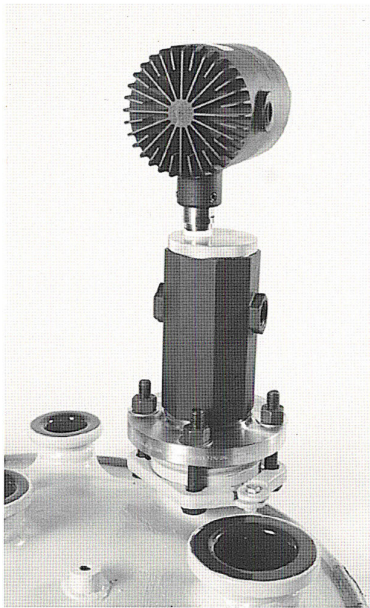


Camera/Light

Data Sheet DS65-500-1



Explosion proof camera with light

Introduction

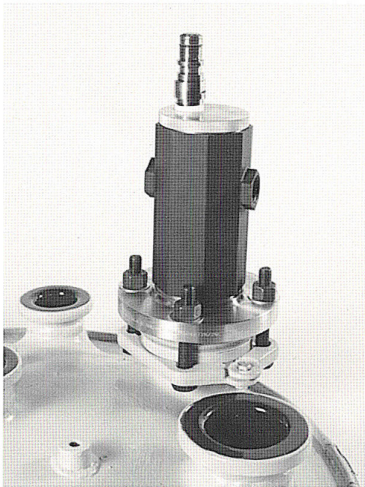
Utilizing the standard Hi-Light™, the Camera/Light incorporates remote viewing and vessel lighting into a single unit.

Features/Benefits

- Single nozzle use for remote viewing, camera recording and vessel lighting
- Interchangability with standard lighting source
- Easily installed on 3" and 4" nozzles
- Remote dimming capability
- Verification of liquid level
- Fiber-optic light guide for maximum light transmission into vessel
- Pre-focused lens
- All wiring connections and maintenance are external
- Remotely view process from control room

Specifications

- Explosion proof
- High resolution CCD camera, 1/2" format. 500 (H) x 482 (V)
- Full glass wetted area
- Cool light output
- Sensitive from .01 lux usable picture (low light black and white), .4 lux with color (varies with model)
- 1.0V P-P, 75 ohm video output
- -22° F to 122° F ambient temperature (-30° C to 50° C)
- Standard black and white camera, color option available
- Removable light



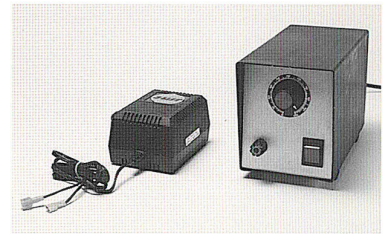
Camera with light removed

Applications

- High purity pharmaceutical applications
- Toxic material – remote viewing
- View liquid and foam level
- Verification when empty or full
- Suited for monitoring pressure vessels, filters, shredders, strippers, hoppers, latex applications and more

Standard Part Numbers

1618933 – Black and white camera with 80 watt light source for flange mounting.



Camera power supply and light intensity dial

The information contained in this bulletin is believed to be reliable general guidelines for consideration of the products and services described herein. The information is general in nature and should not be considered applicable to any specific process or application. Pfaudler, Inc. and Glasteel® Parts and Services expressly disclaim any warranty, expressed or implied, of fitness for any specific purpose in connection with the information contained herein.

Pfaudler, Inc.

A Unit of Robbins & Myers, Inc.

1000 West Avenue
PO Box 23600
Rochester, NY 14692-3600
Phone: 716 235 1000
Fax: 716 423 9644



Glasteel® Parts and Services
A Unit of Pfaudler, Inc.

79 Saginaw Drive
PO Box 20857
Rochester, NY 14602
Phone: 716 235 1010
Fax: 716 235 7923

Copyright©
Pfaudler, Inc. 1997
A Unit of Robbins & Myers, Inc.
All rights reserved.

Glasteel® is a registered trademark
of Pfaudler, Inc.