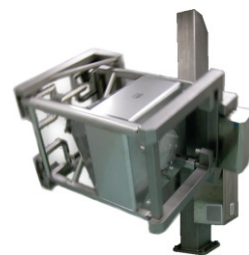




CONTAINER MIXERS



A container mixer is purposed for mixing/blending contents in containers. It is suitable for mixing powder, granules or pellets. At customers request we develop a mixer according to his needs. Controller and control system for parameterization, monitoring, triggering and alarm management are in accordance to CFR Part 11.

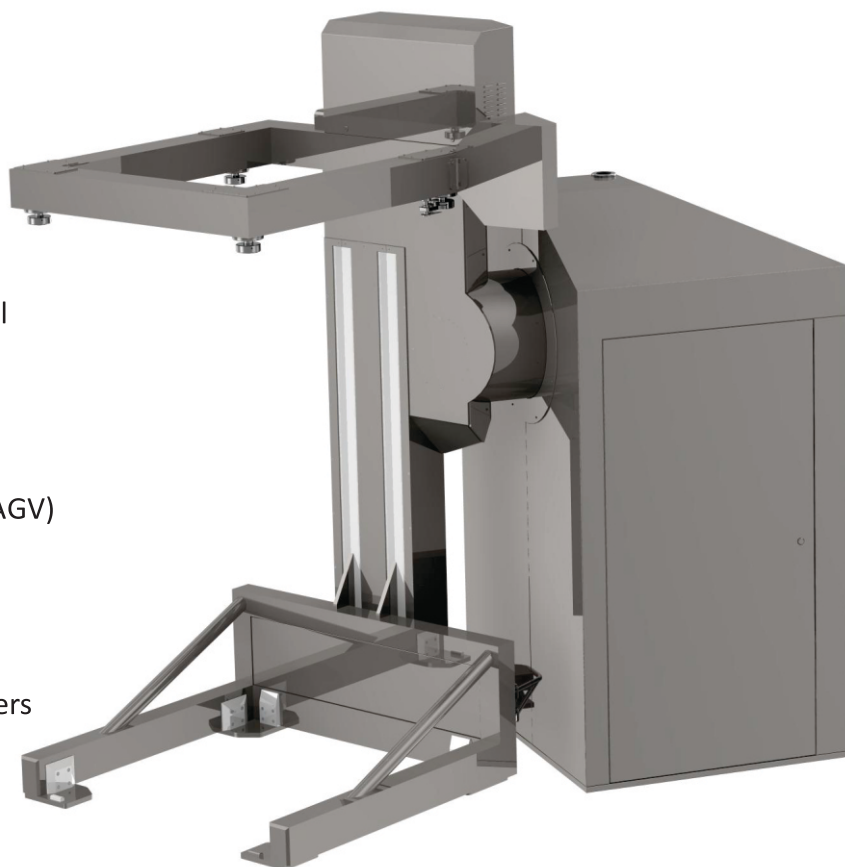
The container can be put on the blender by a forklift or automatic transport. Attachment of the container is adapted to IBC's design. The working area is protected by a safety barrier or a laser scanner and an optical security net.

Basic characteristics

- designed and executed according to GMP standards
- easy cleaning
- available in different sizes – From lab scale up to 3500 L
- for different types and sizes of containers/drums
- container positioning by forklift or automatic transport
- enables automatic clamping, lifting, blending, tilting, positioning and discharging
- blending parameters settings:
 - rotation speed 1 – 45 rpm,
 - time 1 – 180 min.
- rotation direction – clockwise and counterclockwise
- stainless steel material AISI 304 (1.4301)
- splash water protection
- easily accessible electrical components
- safety equipment:
 - safety barrier,
 - optical curtain,
 - laser scanner.

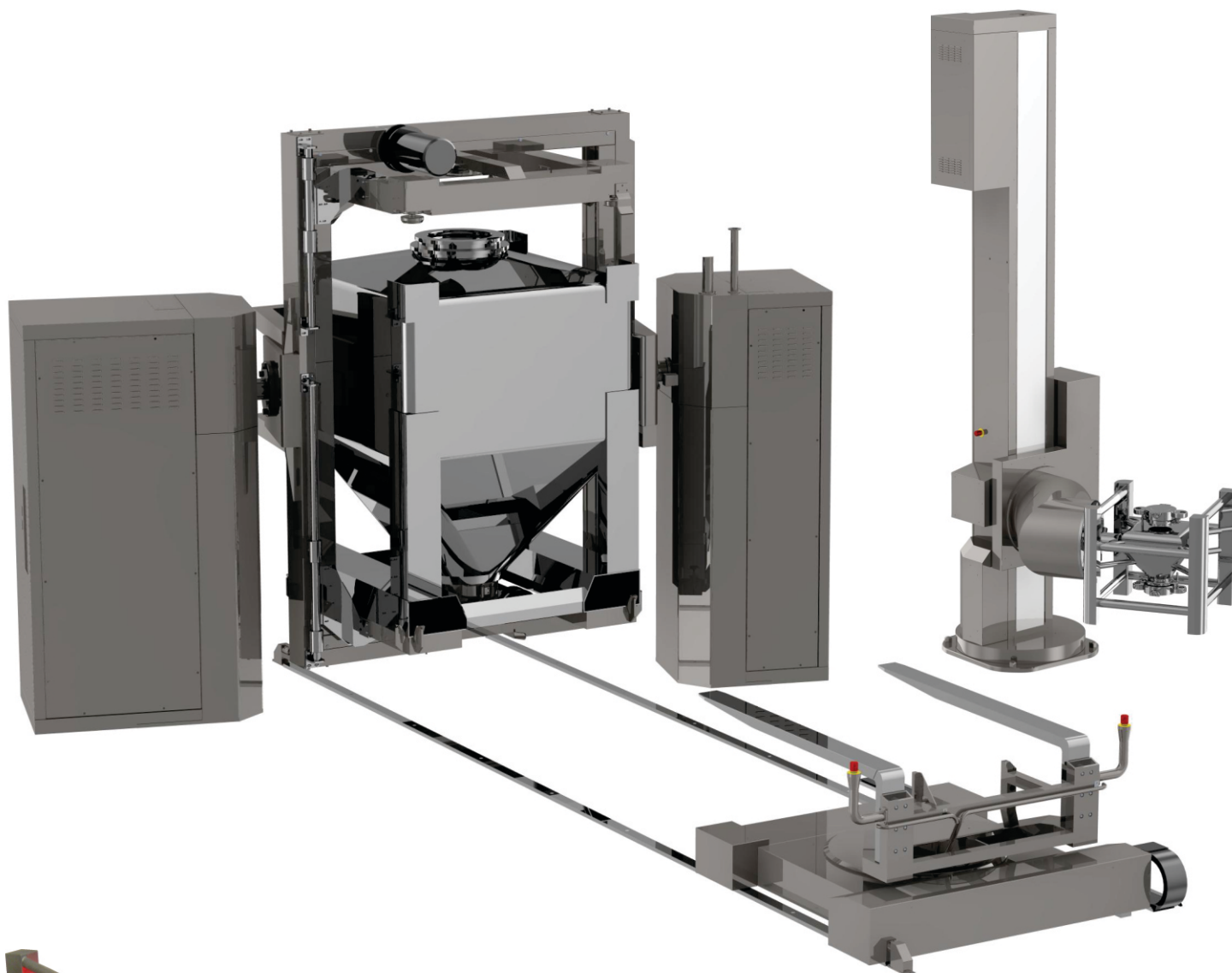
SCADA/HMI

- user friendly touch panel – easy to control
- SIEMENS control equipment
- multi-leveled access
- recipe management
- possible integrations with:
 - autonomous mobile forklift (AGV) or. transport system
 - business (MES) system
 - warehouse (WMS) system
- blending report generation
- monitoring and alarming critical parameters
- history of events
- service, manual and automatic mode
- GAMP 5, 21 CFR part 11 compliant



Clamping system

Our blenders enable blending different containers with different dimensions. Therefore the blenders forks adjust to safely clamp different types of containers.



Safety

Before the mixing process starts, safety sensors start scanning blenders' working area. In case there is any obstacle in the working area, blending will not start. The safety area is established during the whole process. In case anyone enters the working area during blending, the blending process stops. Safety stop placed on reasonable position stops all movements of the machine. This system assures operators' safety and prevents collision with other equipment during the blending process.



Iskra pio d.o.o.
Industrial equipment manufacturer
Trubarjeva cesta 5
SI - 8310 ŠENTJERNEJ



Phone:
Fax:
E-mail:
Internet:

+386 7 3931 400
+386 7 3931 440
info@iskra-pio.si
www.iskra-pio.si